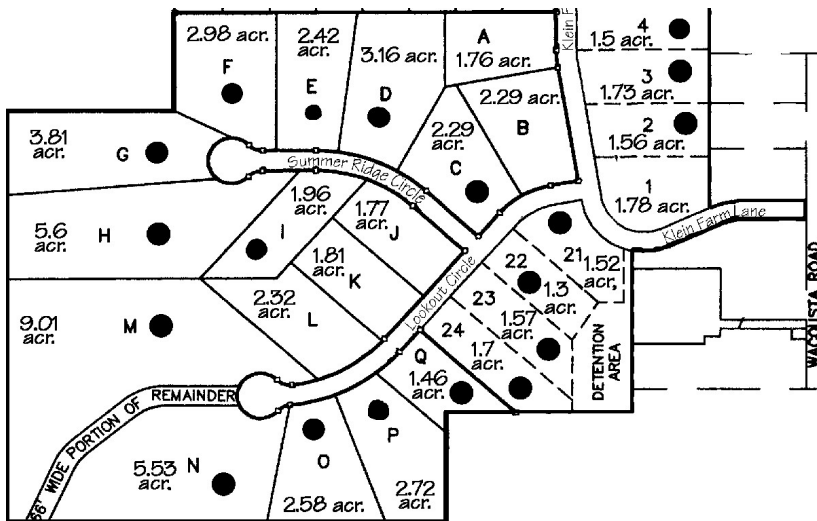


# Somerset Hills

Watertown Township, Grand Ledge, Michigan



## Phase 1

A	1.76 acres	\$60,900.00
B	2.29 acres	\$69,900.00
C	2.29 acres	<b>SOLD</b>
D	3.16 acres	<b>SOLD</b>
E	2.42 acres	<b>SOLD</b>
F	2.98 acres	<b>SOLD</b>
G	3.81 acres	<b>SOLD</b>
H	5.6 acres	<b>SOLD</b>
I	1.96 acres	<b>SOLD</b>
J	1.77 acres	\$62,900.00
K	1.81 acres	\$63,900.00
L	2.32 acres	\$64,900.00
M	9.01 acres	<b>SOLD</b>
N	5.53 acres	<b>SOLD</b>
O	2.58 acres	<b>SOLD</b>
P	2.72 acres	<b>SOLD</b>
Q	1.46 acres	<b>SOLD</b>
24	1.7 acres	<b>SOLD</b>

1	1.78 acres	\$60,900.00
2	1.56 acres	<b>SOLD</b>
3	1.73 acres	<b>SOLD</b>
4	1.5 acres	<b>SOLD</b>
21	1.52 acres	<b>SOLD</b>
22	1.3 acres	<b>SOLD</b>
23	1.57 acres	<b>SOLD</b>

## Somerset Hills

403 S. Clinton, Suite 3  
 Grand Ledge, MI 48837  
 Phone (517) 622-4314  
 Fax (517) 627-3059